

# MAINFRAME STANDARD RACK SHELF SERIES

## SRS SERIES (4-POST)

**MAINFRAME's 1U 4-Post rack shelf series are a robust solution for your 4-post open and closed rack-mounting needs. Mounted on 4 points for maximum strength and stability, these shelves are excellent for storing larger and heavier equipment securely. Use with most any standard 19" 4-post rack or cabinet, these shelves also assist in thermal management with slotted ventilation strips to help reduce the possibility of overheating.**

### INTRODUCING FEATURES

**Suitable for any standard 19" 4-Post rack or cabinet**



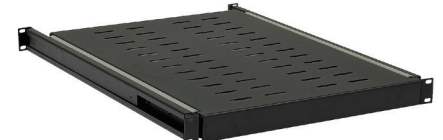
**Surface Finish:**

Black powder coated steel,  
matte finish



**Includes:**

- 4 x 10-32 Mounting screws
- 4 x 10-32 Cage nuts



**Slotted Ventilation Holes**

For maximizing air flow.



#### **Adjustable Shelves (SRS-4-A)**

This 1U 4-Post Adjustable Rack Shelf is the perfect addition to any 4-post rack or cabinet. The split design allows the shelf depth to be adjusted from 505mm (20") to 935mm (36"). Save yourself the time and frustration of trying to find a rack shelf to fit a specific depth, and let this versatile solution meet all your shelving needs.



#### **Fixed Shelves (SRS-4-F)**

This 1U 4-post fixed shelf supports your heaviest equipment with a static load of 120kg (265lbs) and features slotted ventilation strips to help reduce the possibility of overheating. Perfect for supporting non-rack mountable IT/AV equipment such as UPS's, battery backups, amps, streamers, servers, routers, hubs, and more.



#### **Sliding Shelves (SRS-4-S)**

Our 1U 4-post sliding rack shelves are excellent for supporting computers, monitors, amps, streamers or any other component that you want the ability to slide out and access the back of. The shelf extends a full 19" and supports a weight of 45kg (99lbs).

# MAINFRAME STANDARD RACK SHELF SERIES

## SRS SERIES (4-POST)

### ADJUSTABLE



SRS-4-A

### FIXED



SRS-4-F

### SLIDING



SRS-4-S

## SPECIFICATIONS

MODEL	SIZE	DIMENSIONS W x D x H (mm)	DIMENSIONS W x D x H (in)	LOAD CAPACITY
SRS-4-A	1U	485 x 1003 x 34	19.09 x 39.49 x 1.34	70kg (154lbs)
SRS-4-F	1U	487.6 x 550 x 50.5	19.20 x 21.65 x 1.99	120kg (265lbs)
SRS-4-S	1U	482.6 x 550 x 43	19.00 x 21.65 x 1.69	45kg (99lbs)

MAINFRAME provides a 3-year warranty.